



1



2

Bates Masi Architects

# ELIZABETH HOUSE

East Hampton, New York, USA

The change of seasons had a major impact on the designers of this house: the architect and his wife were particularly inspired by the seasonal experiences of the nearby lake. The same body of water they would kayak on in the summer is re-invigorated each year when it freezes over in the winter for ice-skating. They wanted their home to have the same flexibility and range, both in its use of space and in details that would interact with the environment and evolve over time. || This interaction began with a material palette that could be applied both indoors and out. Cedar, concrete, Santos mahogany decking, frosted glass, slate, aluminum, and copper slip easily from inside to out, blurring the line between the two. The front entry and interior stair are made from mahogany decking. Light seeps through the boards through two stories, giving a feel of openness. Mahogany decking from the private deck off the master bath becomes the shower floor and gives the already exposed space a more outdoor feel. The double-sided indoor/outdoor fireplace is faced with crimped copper that is already reaching a rich patina. A Spanish cedar entrance door is forever changing: it incorporates a window with a large air space into which small pieces of beach glass are deposited after daily

walks on the beach, thus slowly changing the color and intensity of light as the collection increases. || As materials were selected to span between indoors and out, they were also adapted to perform in various applications. The jatoba floor in the kitchen wraps up the side of the island to double as a countertop. Its natural hardness and water-resistant OS Hardwax finish make it equally desirable for both applications. OS Hardwax is an environmentally friendly natural sealer that is water- and stain-resistant, safe for children, and produces no off-gassing. Accordingly, this oil was also appropriate for the mahogany veneer plywood lining of the MDF kitchen cabinets. || Over time, these oiled hardwood and veneered surfaces will slowly darken. Outside, rough sawn tongue and groove Western red cedar siding defines the spaces beneath the house's red-dyed concrete paneled shell. In contrast to the permanence and vibrancy of the panels, the boards will mature to a mellow, weathered, silvery gray conducting their own dialogue with the elements. **In and through time the house will mature and evolve.** It is designed to communicate with the environment and with its owners, changing in subtle ways only noticeable to those who really know it.

- 1 Southeast corner featuring cedar and concrete siding materials
- 2 South elevation featuring copper-clad fireplace and master bath deck above
- 3 Kitchen, dining, and living areas open directly onto the deck
- 4 The stair is made of the same mahogany decking used on the exterior
- 5 The dining area's window overlooks the north yard
- 6 Second floor plan
- 7 First floor plan

Photography: courtesy Bates Masi Architects



3

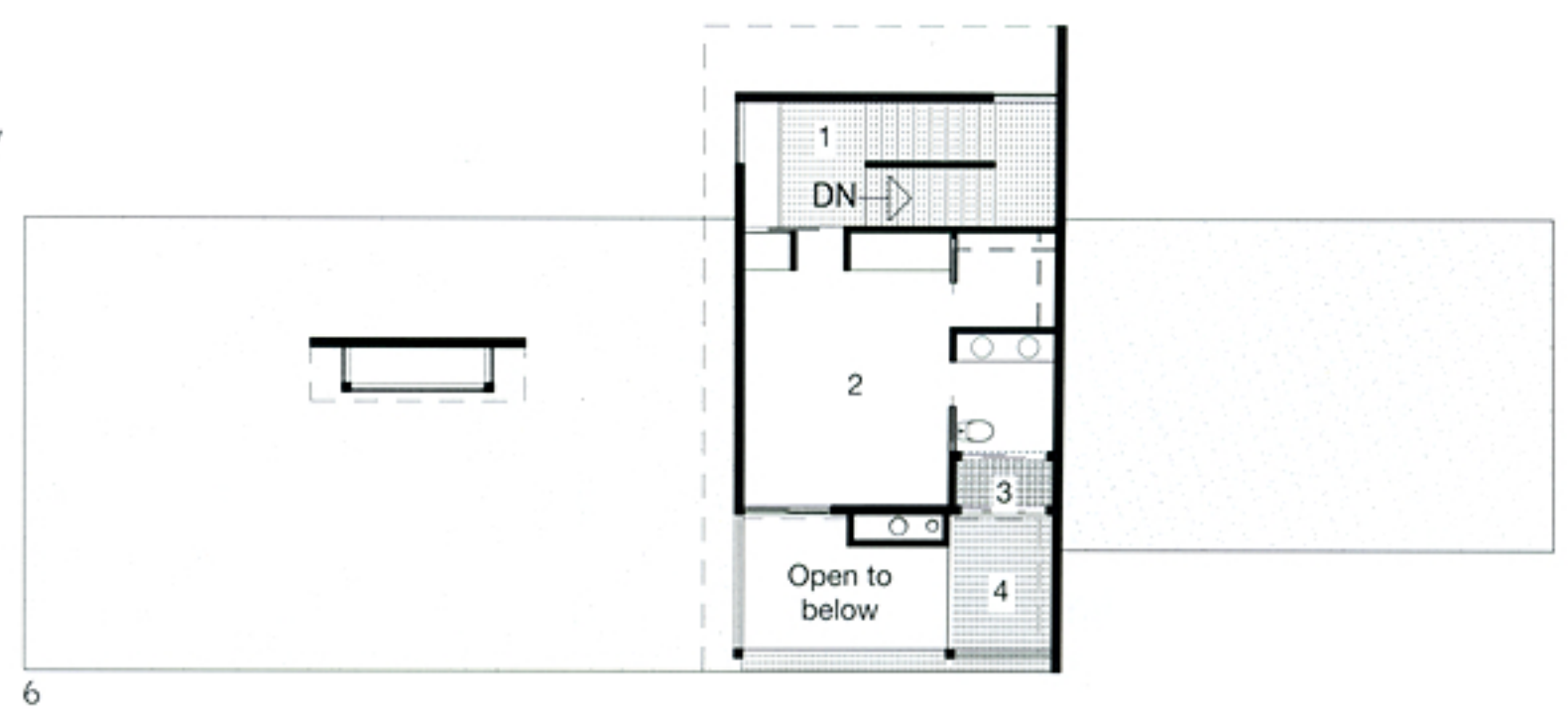


4



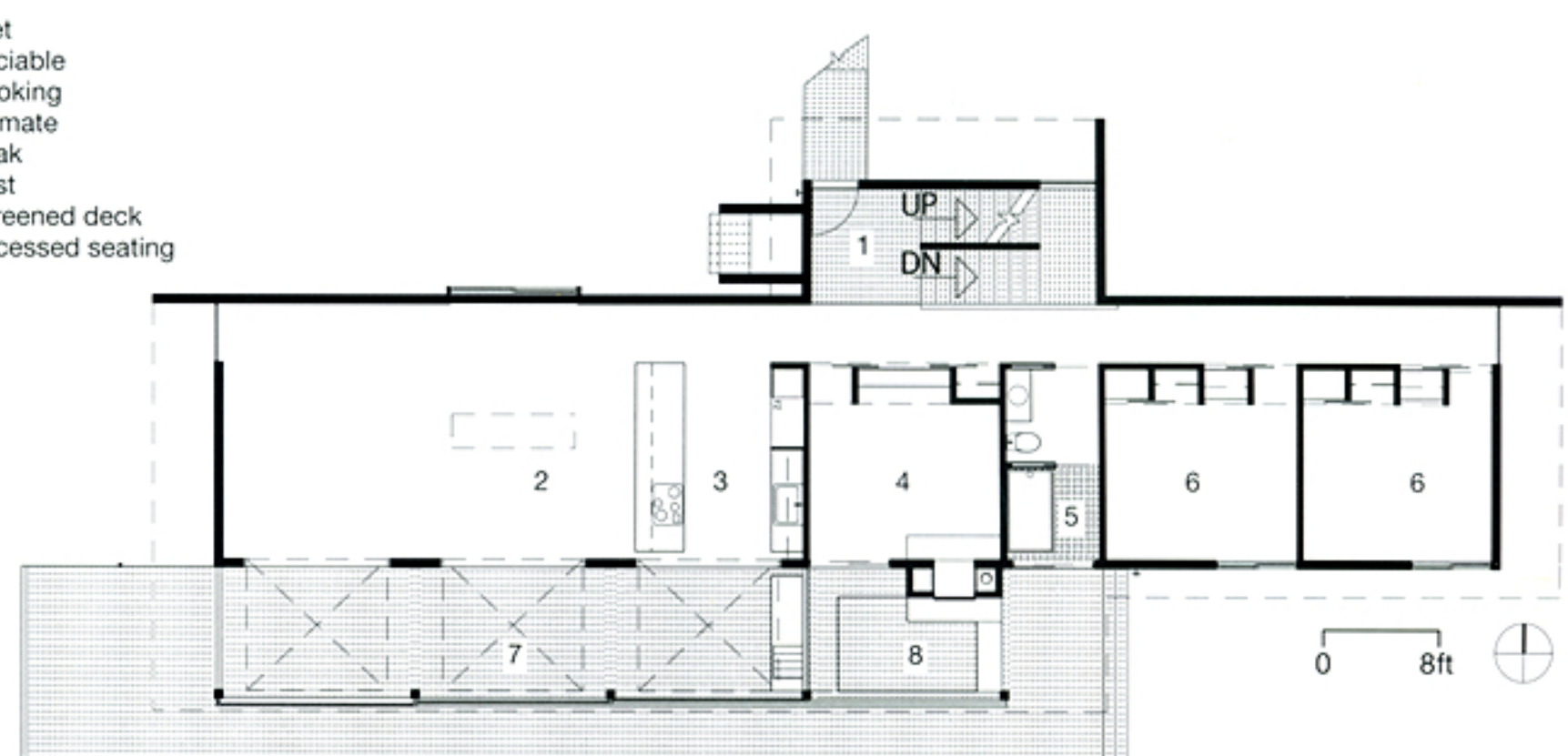
5

- 1 Writing
- 2 Rest
- 3 Rinse
- 4 Rinse balcony



6

- 1 Inlet
- 2 Sociable
- 3 Cooking
- 4 Intimate
- 5 Soak
- 6 Rest
- 7 Screened deck
- 8 Recessed seating



7