

# East Hampton House

*Open platform frame dissolves interior-exterior boundary*



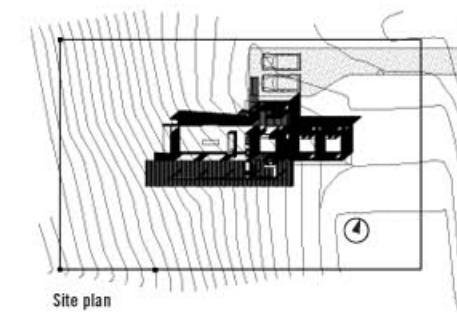
## *Paul Masi*

*Four distinct seasons and their change from one to the next set the stage for the 1,800sf home for my wife and me. As the nearby lake that provides swimming and kayaking in the summer freezes over to become an ice rink in winter, we wanted our house to have the same flexibility in use of space and details that would interact with the environment and evolve over time.*

Such interaction began with the choice of materials that could be applied both indoors and out. Western red cedar, concrete, mahogany, frosted glass, slate, aluminum and copper slip easily from the interior to the exterior.

The long, narrow footprint, 86ft. long x 16ft. wide, has the long axis oriented east-west so that the closed in north side provides privacy from neighbors, and the open side, bordered by a deck, captures the southern sun. Much of the house is one story except for a central two-story construction that contains a full basement, a stairwell and the main entrance. The open stairwell located at the main entrance actually extends three stories high from the basement to the second level master bedroom and bath.

While being applied to both indoors and outdoors, the material palette also adapts to perform in a variety of applications. For example, the jatoba hardwood floor wraps up the side of the kitchen island to double as a countertop where it is finished with natural, water-resistant



1. The main approach showing the east facade finished with Hardie panels, cedar vertical battens, and cedar siding. The main entry at the two-story construction contains the stairwell.
2. The east end of the house with a view of the deck running along the south side.
3. The house appears to change with the seasons as emphasized by snow collecting on the horizontal battens.



First floor plan

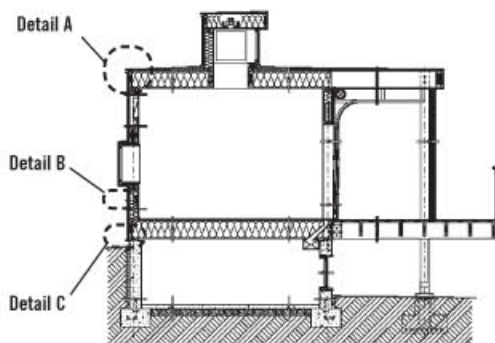


Second floor plan

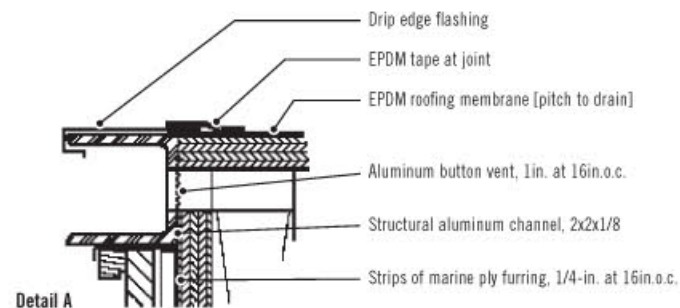
- A Entry
- B Living area
- C Kitchen
- D Study
- E Bath
- F Bedroom
- G Screened deck
- H Recessed seating
- I Studio
- J Master bedroom
- K Shower
- L Private deck



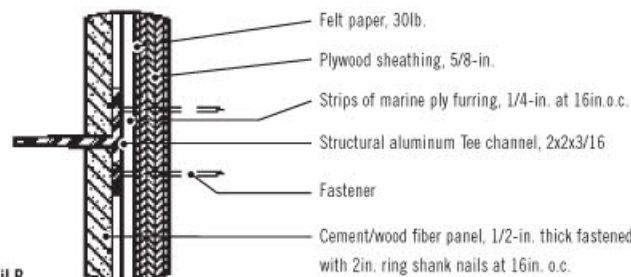
Section A-A



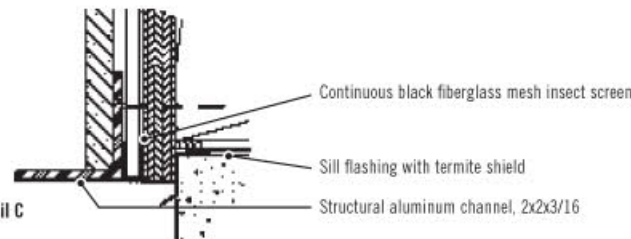
Section B-B



Detail A



Detail B



Detail C



OS Hardwax oil from Germany. Mahogany veneer plywood lines kitchen cabinets but also takes pride of place in limited uses as a fireplace mantel, drawer fronts and benches. The small Santos mahogany front porch deck extends inside to form the entire stairwell construction. Natural light from clerestory windows in the stairwell seeps through the gaps in the mahogany boards. The windows are opened in summer for a cooling stack effect.

The main living area and kitchen fills with natural light from a skylight and

4. The south side of the two-story construction. Note the recessed seating in the deck by the fireplace.
5. Detail of one of three the garage doors that open the house to the south deck.
6. The stairwell at the front door has a rich color contrast to the walls and contains gaps between the boards for penetration of light.

clerestory windows in the end wall, but the largest source comes from a series of three glazed garage doors that literally open the main part of the house to the deck along the south wall. Such openness, and the device of extending the red shell roof and walls past the house perimeter, blurs the boundary between exterior and interior.

We built the house ourselves, setting up a shop in the basement where all the trim and cabinets were prepared. We made the standard platform framing even more economical by narrowing the house enough to clear span with 2x12 floor and ceiling joists on 16in. centers. The roof was finished with plywood, tapered rigid insulation sloped to interior drains, wood fiber board and roofing membrane. We left only richly colored wood in the flooring, stairwell framing and cabinets exposed in delightful contrast to the white-painted drywall ceilings and walls.

Outside, rough sawn tongue and groove western red cedar siding defines the spaces beneath the red-stained Hardie panels, demarcating the front entry wall, portions of the south wall, and the east end wall. Panel joints are finished with horizontal aluminum Tee battens and vertical cedar battens in contrast to the more permanent, vibrant color of the Hardie panels. The cedar will weather to a silver color. Through such changes, the house will evolve with its surroundings in subtle ways only noticeable to those who really know it. ■

*Paul Masi is partner with Bates Masi Architects, Sag Harbor, NY. More photos and drawings of this project are found at [www.woodmags.com](http://www.woodmags.com). Click on the Wood Design & Building logo, then Mag Rack and go to issue #32.*

ARCHITECT: BATES MASI ARCHITECTS, SAG HARBOR, NY  
 STRUCTURAL ENGINEER: STEVEN L. MARESCA, HAMPTON BAYS, NY  
 GENERAL CONTRACTOR: BATES MASI ARCHITECTS, SAG HARBOR, NY  
 LANDSCAPE ARCHITECT: BATES MASI ARCHITECTS, SAG HARBOR, NY  
 PHOTOS: BATES MASI ARCHITECTS, SAG HARBOR, NY



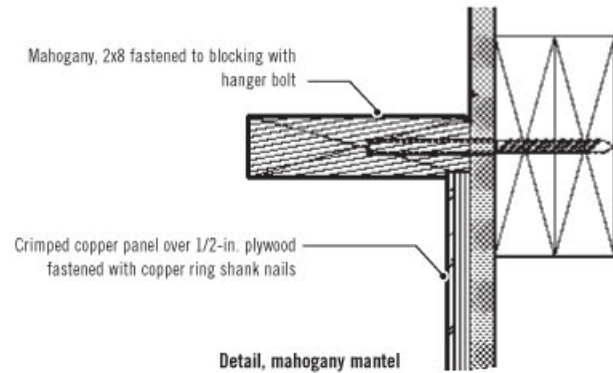
7. Three garage-style doors open the main living and dining area. The hardwood floor continues up to form the kitchen counter.
8. The mantel consists of a mahogany ledge and crimped copper panel over plywood.
9. The boxed-in window projects out from the north facade.



7



8



9

## PRODUCT SPECS

### Frame

- Platform lumber framing, insulated stud walls; 2x12 insulated roof joists 16in.o.c. with 5/8-in. plywood, tapered rigid insulation sloped 1/4in. per foot to interior drains, 1/2-in. wood fiber board and EPDM roof membrane

### Interior

- Painted drywall, jatoba hardwood floors, mahogany shelf for mantel, mahogany veneer plywood drawer fronts and benches, medium density fiberboard [MDF] medite cabinets painted white

### Exterior

- Rough sawn tongue and groove western red cedar siding left to weather, Hardie panels [cement/wood fiber panel] 1/2-in. thick fastened with 2in. ring shank nails to vertical 1/4-in. plywood strips 16in. o.c., horizontal aluminum Tee battens and vertical cedar battens; wall substrate 30lb. felt paper, roof finished with plywood and roofing membrane.

### Doors & Windows

- Custom Spanish cedar doors, clear anodized aluminum doors and windows by Gerkin.

