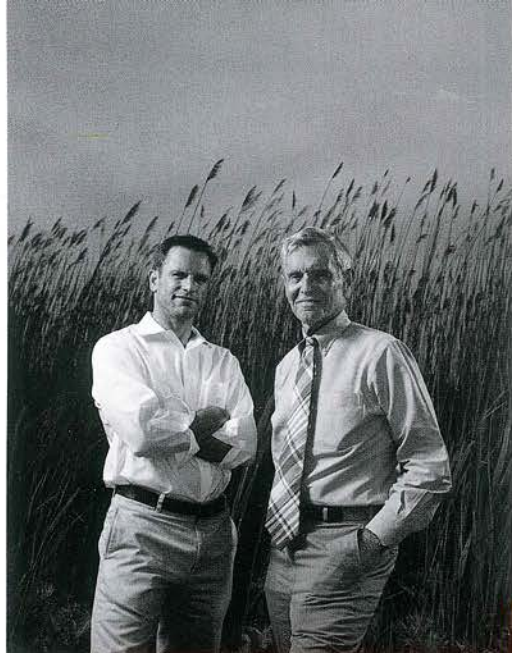


SEPTEMBER 15, 2017  
INTERIOR  
DESIGN<sup>®</sup>

# homes<sup>™</sup>

quiet  
reflections



### Bates Masi + Architects

"Maximum Exposure," page 164

**principal:** Paul Masi, AIA, LEED AP.

**founder:** Harry Bates.

**firm site:** East Hampton, New York.

**firm size:** 15 architects and designers.

**current projects:** Houses in New York; Sands Point, Southampton, and Montauk, all in New York; Tenafly, New Jersey; and Annapolis, Maryland.

**honors:** Interior Design Best of Year Awards; AIA Chapter Merit Awards.

**role model:** Architecture critic Paul Goldberger, who wrote the local planning board a letter in support of the firm's proposed new office design.

**on land:** Bates is spending his free time training his new puppy.

**on sea:** Masi is an avid (and year-round) surfer.

[batesmasi.com](http://batesmasi.com)



### Archstudio

"Paving the Way Forward," page 182

**principal and founder:** Han Wenqiang.

**office site:** Beijing.

**office size:** 10.

**current projects:** A teahouse in Hutong, the Waterside Buddhist Shrine, and Tangshan Organic Farm, all in Beijing.

**honors:** An Interior Design Best of Year Award; Refurbishment of the Year from Leading European Architecture Forum.

**role model:** The Japanese architect Hiroshi Nakamura, for his sculptural forms and transformative spaces.

**culture:** Han teaches at the China Central Academy of Fine Arts.

**stature:** His work was exhibited at Harvard in 2016 and the Korean art biennial in 2015.

[archstudio.cn](http://archstudio.cn)

## HEADLINERS

### Workshop/APD

"Changing Light," page 204

**co-founder and principal:** Andrew Kotchen.

**firm site:** New York.

**firm size:** 22 architects, 12 designers, and 2 product designers.

**current projects:** Residences in New York, Pittsburgh, Miami, Nantucket, Massachusetts, Fort Lauderdale, Florida, and Asheville, North Carolina, as well as the Bahamas; hotels in New York and Salt Lake City; restaurants in Chicago and Pleasantville, New York.

**honors:** Interior Design Best of Year Award honoree.

**role model:** Hugh Newell Jacobsen for the purity and simplicity of form in his houses and how they connect to the landscape.

**contraction:** APD stands for architecture, planning, design.

**expansion:** Kotchen and co-principal Matt Berman launched their debut furniture collection with Desiron.

[workshopapd.com](http://workshopapd.com)

### Jan Henrik Jansen Arkitekter

"Circular Logic," page 142

**owner:** Jan Henrik Jansen.

**office site:** Copenhagen.

**office size:** Three architects.

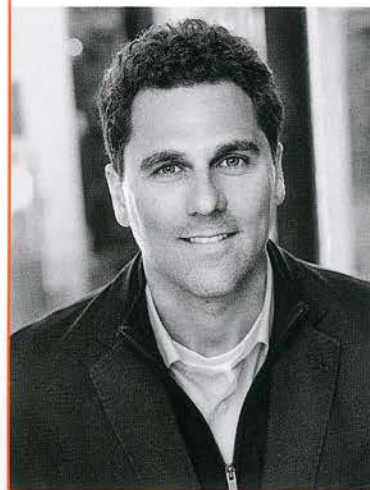
**current projects:** Houses in Odense, Jutland, and Bornholm, all in Denmark.

**honors:** Odin Prisen.

**school's in:** Jansen came to Denmark 20 years ago as an exchange student at the Aarhus School of Architecture.

**school's out:** He recently spent a week vacationing in Munich, in his native Germany.

[janhenrikjansen.dk](http://janhenrikjansen.dk)



# maximum exposure

Designed by Bates Masi + Architects, a modernist glass box in East Hampton, New York, celebrates its surroundings—and its structure

text: fred bernstein





**It's nice living on the water.** But when Superstorm Sandy hit Long Island in 2012, it destroyed a number of waterfront houses, including one midcentury dwelling on a lagoon in East Hampton, New York. When the owners decided to tear down the damaged structure and build a new residence, Bates Masi + Architects, based in the same town, proved a logical choice for the project. Firm founder and *Interior Design* Hall of Fame member Harry Bates has been designing modernist houses in the East End since the 1960s, when the original property was built.

The design needed to satisfy both memories and aspirations. The clients wanted it to be, as principal and fellow Hall of Famer Paul Masi eloquently puts it, "the child of the old one." That meant it should reveal its structure honestly. "Our conversations kept returning to the fact that the design of the old house expressed how it was made," he says. "There was a truthfulness to it that they really appreciated." The new house would be on the exact same spot as the old one, with the same orientation, since the site had already been cleared and landscaped to accentuate the owners' favorite vistas. But to comply with new flood zone requirements and avoid the same fate as its predecessor, the structure had to be built five feet above the ground.

The 3,500-square-foot four-bedroom residence is slightly larger than the old one and sits on a concrete base, like a sculpture poised on a pedestal. In this manner, the glass-wrapped dwelling recalls Mies van der Rohe's iconic Farnsworth

**Previous spread:** Schoolhouse-style oak chairs surround a bluestone-top dining table in an East Hampton, New York, home by Bates Masi + Architects. The firm also designed the custom bronze-and-pine lighting pendant.

**Opposite, from top:** A sculpture from the clients' collection punctuates a cypress-clad corridor between the living area and master bedroom wing. Kitchen cabinetry is bamboo plywood with exposed edges and eased finger pulls. The west-facing side of the house culminates in a cantilevered deck with water views; exterior paneling is also cypress.

**Bottom:** Skylight and lighting recesses were milled into the CLT ceiling; in the living area, an abaca rug anchors a pair of vintage armchairs and a sofa by Spanish designer Jan Gasca.



BATES MASI + ARCHITECTS

BATES MASI + ARCHITECTS

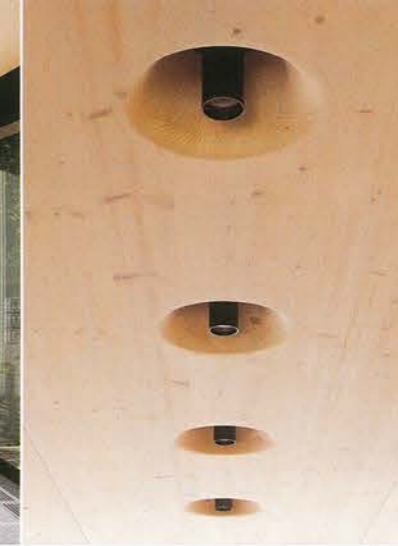
House in Plano, Illinois—which is also raised five feet to avoid flooding. An open central volume containing the living/dining area and kitchen is flanked, nearly symmetrically, by bedroom wings. Exposed steel columns and beams support a roof made of cross-laminated timber, a product capable of spanning long distances—in this case, up to 30 feet. The CLT pine panels, like most of the house's components, were readied for installation in a factory. That left much less to do on-site. "The contractor poured the slab, assembled the steel structure, craned the ceiling panels into place, and put up the doors and windows—and we were done," Masi reports. "We didn't so much as drill a hole."

The firm is renowned for coaxing beauty and variety from a limited materials palette. "Too many ingredients spoil the stew," Bates says. All paneling, indoors and out, is cypress. Cabinetry throughout is bamboo plywood, its exposed edges part of the "how it was made" motif. And anywhere stone was specified, the design team used the same

fossil-flecked Montana limestone: outside, as sawn-finish rectangles that form steps and terraces leading from driveway to entry; inside, as irregular flamed slabs fitted together like a jigsaw puzzle to create the floor, their freeform edges a gentle counterpoint to all the right angles. Bathroom countertops are also made of the same stone, this time with a honed finish.

But the CLT perhaps proved most amenable to Bates Masi's just-a-few-ingredients approach. Exposed on their underside to form the ceiling, the prefab pine panels accommodate lighting in rows of milled recesses, while elliptical perforations create skylights above the kitchen and living areas. The openings have radiused lips, the precise curvature mocked up via 3-D printer. "The curves really showcase the laminated timber layers," says Masi. "They're also better for light distribution—you don't get the hard shadows typical of overheads."

Layered wood carved into sinuous forms is another recurring motif. Even the powder room sink was sculpted from a thick block of laminated bamboo plywood. ➤



**Top, from left:** Another view of the kitchen, with stainless steel counters and backsplash. The Italian factory that produced the CLT panels gave the milled recesses radiused lips to soften lighting shadows. An Eero Saarinen womb chair presides in the glass-wrapped master bedroom.

**Bottom:** Black aluminum door and window frames match the black-painted steel columns and beams; set on a concrete base, the house is nearly symmetrical, with bedroom wings bookending the main living spaces.

"The clients wanted the design of the house to express how it was made"



**Below:** A secondary sitting area is tucked behind the custom double-sided wood-burning fireplace, with burnished bronze surround.

**Opposite, from top:** One of the three guest bedrooms, with bamboo-plywood headboard and leather folding stools. The same furniture mix populates another guest bedroom. The powder room, with milled bamboo-ply sink.



BATES MASI + ARCHITECTS

Above it, a shallow recess in the cypress slats frames a lozenge-shape mirror.

Bronze door handles, rescued from the old house, inspired the choice of metal that surrounds the double-sided fireplace, which separates the living/dining area from a more intimate seating zone. The same material was wedged to a slice of CLT to create the custom chandelier illuminating the dining table—high-tech and yet gentle, like the house itself.

For all its architectural efficiency, the house is comfortable to live in. The abundant wood finishes and limestone floors lend warmth and texture. The owners brought in furniture from previous residences, including vintage armchairs in the living room and a bluestone dining table patinated from years of use. "Familiar pieces like that make the house feel like a home," says Masi. How much the architects accomplished with a simple palette is a testament to their creativity. To return to Bates's metaphor, you only need a few ingredients if you choose those ingredients wisely. 

#### PROJECT TEAM

**LAGUARDIA DESIGN GROUP:** LANDSCAPE DESIGN.  
**STEVEN MARESCA:** STRUCTURAL ENGINEER. **PERAGINE MILLWORK:** WOODWORK. **LETTIERI CONSTRUCTION:** GENERAL CONTRACTOR.

#### PROJECT SOURCES

**FROM FRONT:** DISTRICT EIGHT DESIGN THROUGH YLIVING: DINING CHAIRS (LIVING/DINING AREA). **DESIGN WITHIN REACH:** SOFA. **BOKID COLLECTION:** RUG. **WOLF:** COOKTOP, OVEN, DOWNDRAFT VENTILATION (KITCHEN). **SUB-ZERO:** WINE REFRIGERATOR. **KWC:** FAUCET. **KNOLL:** CHAIR (MASTER BEDROOM); SOFA (SITTING AREA). **BIG ASS FANS:** CEILING FAN (MASTER BEDROOM). **SERENA & LILY:** STOOLS (GUEST BEDROOMS). **CIFIAL:** FAUCET (POWDER ROOM). **THROUGHOUT:** FLEETWOOD THROUGH NORTH SHORE: DOORS AND WINDOWS. **HEVI LITE:** CEILING LIGHTS.



BATES MASI + ARCHITECTS

